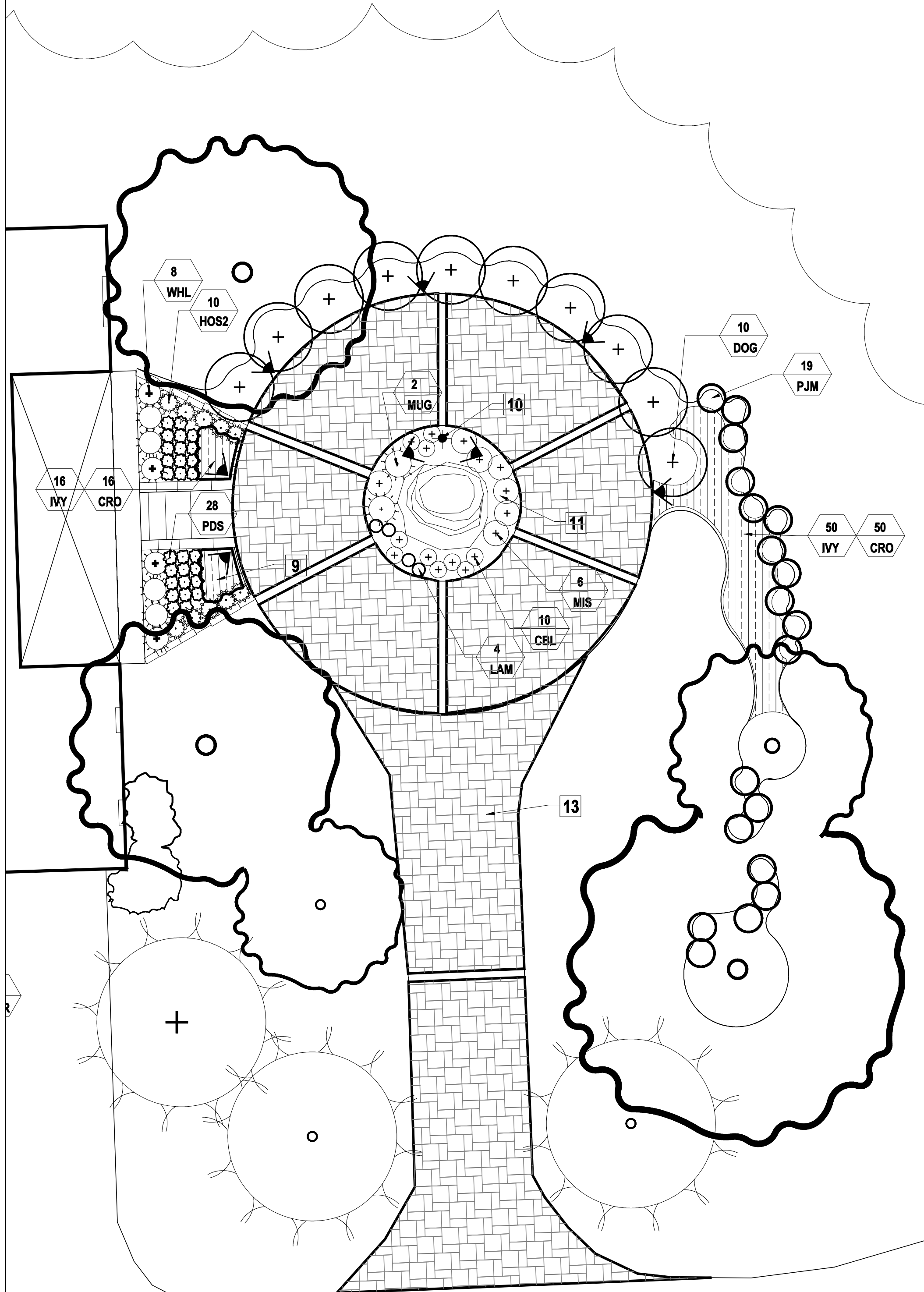
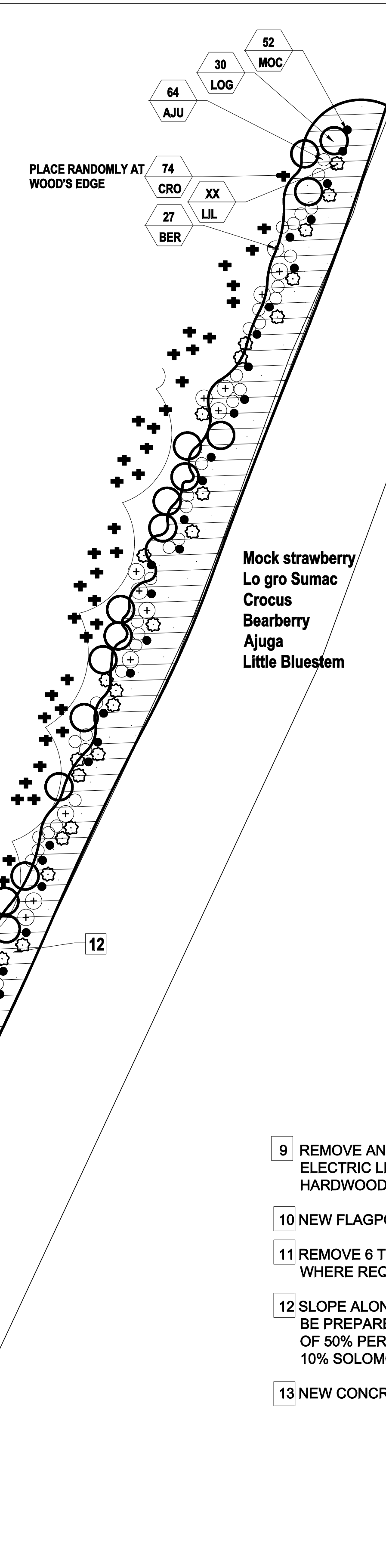


LO2 PLANT LIST

QTY.	KEY	COMMON NAME	BOTANICAL NAME	SIZE			COND.	FLOWERING TIME										FLOWER COLOR	NOTES
				cal/vol	HEIGHT	SPREAD		Feb	Mar	Apr	May	Jun	Jul	Aug	Sep	Oct			
BULBS and PERENNIALS																			
XX	CRO	SNOW CROCUS	<i>Crocus chrysanthus 'Advance'</i>	BULB	6-12"	6-12"	BULK										Yellow		
XX	CBL	CRANESBILL	<i>Geranium 'Gerwat' ROZANNE</i>	6" pot	6-12"	6-12"	CONT										Violet Blue		
XX	HOS1	BIG BLUE HOSTA	<i>Hosta (Tardiana Group) 'Halcyon'</i>	#3	18-21"	18-21"	CONT										Lilac-blue	Substitutes should be large mature size with large blue leaves	
XX	HOS2	VARIEGATED HOSTA	<i>Hosta 'Janet'</i>	#3	18-21"	18-21"	CONT										Pale lavender	Substitutes should be variegated lime green with broad leaf	
XX	PJM	PJM RHODODENDRON	<i>Rhododendron (PJM Group)</i>	#5	24-30"	18-24"	CONT										Lavender		
TREES, SHRUBS, ORNAMENTAL GRASSES AND GROUND COVERS																			
XX	NOR	NORWAY SPRUCE	<i>Picea abies 'Little Gem'</i>	1-1 1/2" CAL	5-6'	4-5'	B&B										N/A	FULL BRANCHING TO GROUND	
XX	DOG	TATARIAN (REDTWIG) DOGWOOD	<i>Cornus alba</i>	#5	3-4'	3-4'	CONT										White		
XX	BER	COMMON BEARBERRY	<i>Arctostaphylos uva-ursi 'Massachusetts'</i>	#1	8"-12"	8"-12"	CONT											GROUND COVER PLANT FORM	
XX	AJU	BUGLEWEED	<i>Ajuga reptans 'Catlin's Giant'</i>	4" POT	6"-10"	6"-10"	CONT												
XX	LIL	LITTLE BLUESTEM	<i>Schizachyrium scoparium</i>	4" POT	6"-10"	6"-10"	CONT												
XX	LOG	FRAGRANT LO-GRO SUMAC	<i>Rhus aromatica 'Gro-Low'</i>	#1	8"-12"	8"-12"	CONT												
XX	MOC	MOCK STRAWBERRY	<i>Duchesnea indica</i>	4" POT	6"-10"	6"-10"	CONT										Yellow		
XX	MUG	MUGHO PINE	<i>Pinus mugho mugus</i>	#3	18-24"	18-24"	CONT										N/A	FULL BRANCHING TO GROUND	
XX	MIS	EULALIA GRASS	<i>Miscanthus sinensis 'Adagio'</i>	#1	8"-12"	8"-12"	CONT										Pink mat. to white	MIN 12 LEAVES PER PLANT	
XX	PDS	PRAIRIE DROPSSEED	<i>Sporobolus heterolepis</i>	#1	6"-12"	6"-12"	CONT										Pink and brown	MIN 8 LEAVES PER PLANT	
XX	IVY	ENGLISH IVY	<i>Hedera helix</i>	4" POT	8"-12"	8"-10"	CONT										Pale purple		



Mugho Pine
Crocus
Cranesbill
Lamb's Ear
Shore Juniper
Switch grass

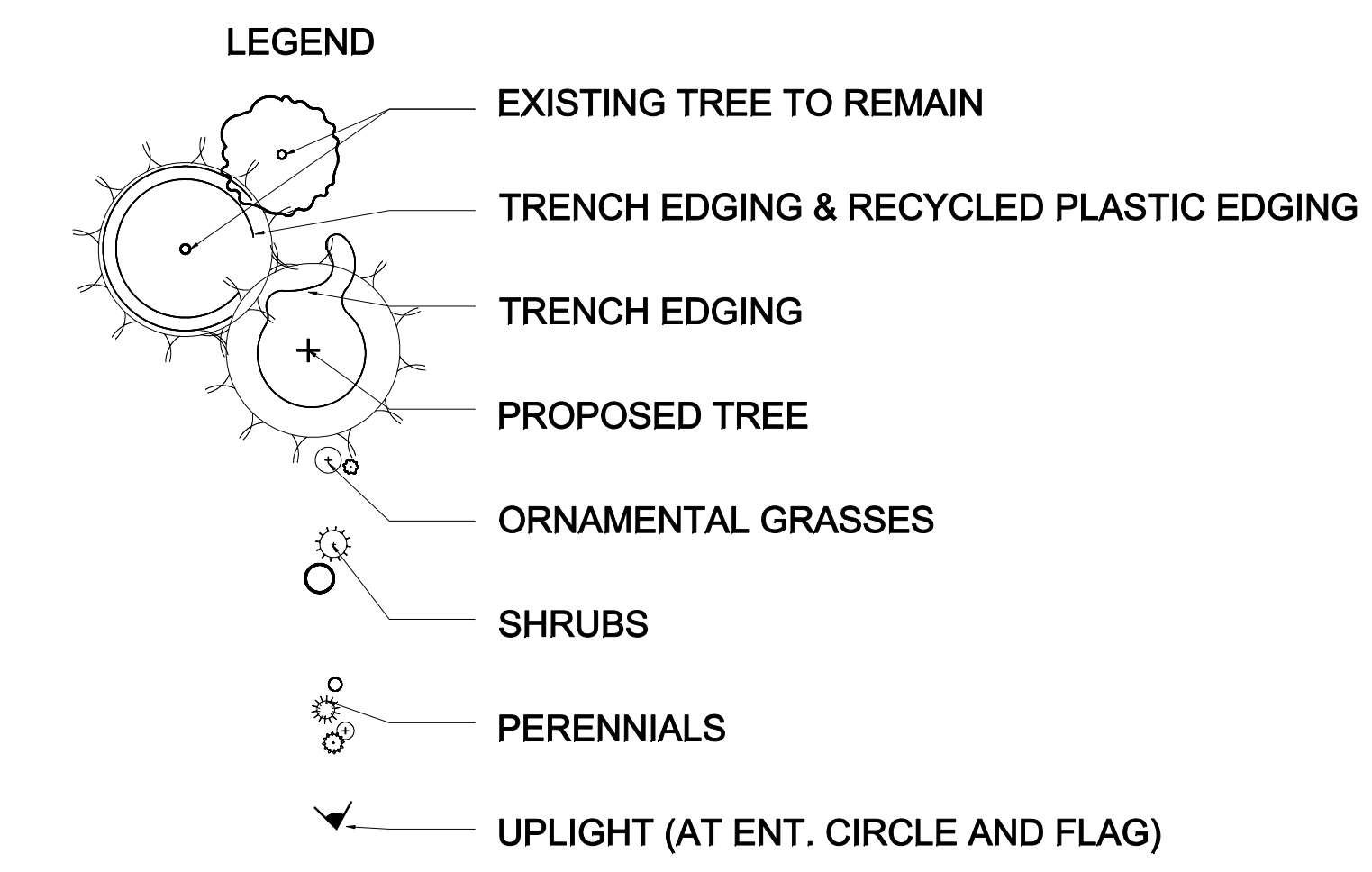


Mock strawberry
Lo gro Sumac
Crocus
Bearberry
Ajuga
Little Bluestem



REMOVE AND HAUL EXISTING SOD IN PLANTED AREAS ON EA. SIDE OF STEPS. SALVAGE COBBLESTONES FOR REUSE. INVESTIGATE ELECTRIC LINE AND SOURCE PRIOR TO PLANTING

- 9 REMOVE AND HAUL EXISTING SOD THIS AREA. SALVAGE COBBLESTONES FOR REUSE. INVESTIGATE ELECTRIC LINE AND SOURCE PRIOR TO PLANTING. MULCH COMPLETED BED WITH 2 INCH LAYER HARDWOOD BARK MULCH. RESET COBBLE EDGING TO ORIGINAL LOCATION.
- 10 NEW FLAGPOLE
- 11 REMOVE 6 TO 8 INCHES AT EDGES OF EXISTING BOULDER IN THE CENTER OF THE CIRCLE WHERE REQUIRED TO ALLOW FOR PLANT PITS
- 12 SLOPE ALONG ENTRANCE DRIVE, AVERAGING 6 FEET IN WIDTH BY 200 LINEAL FEET SHALL BE PREPARED BY ADDING COMPOSTED SOIL USING HAND DIGGING METHODS. HYDROSEED WITH A MIX OF 50% PERENNIAL RYEGRASS, 20% LITTLE BLUESTEM, 10% WILD LEEK, 10% GREAT WATERLEAF, 10% SOLOMON'S PLUME WITH TACIFIER AGENT PRIOR TO PLANTING OTHER PLANTS SHOWN.
- 13 NEW CONCRETE OVERLAY WITH STAMPED PATTERN AND COLOR SEALANT.



LANDSCAPE PLAN
SCALE: 1" = 10'-0"



Scale:

Revision:

NO.	DATE	BY	DESCRIPTION

BAUMANN RESIDENCE
LANDSCAPE PLAN
IMPERIAL, MISSOURI

Keyplan:

Scale:

Project No.: **001124**

Drawing Title: **LANDSCAPE PLAN AND DETAILS**

Designed By: _____
 Drawn By: _____
 Checked By: _____

Drawing No. **L02**
 Sheet _____ of _____