

LO1 PLANT LIST

QTY.	KEY	COMMON NAME	BOTANICAL NAME	SIZE	COND.	FLOWERING TIME										FLOWER COLOR	NOTES
						Feb	Mar	Apr	May	Jun	Jul	Aug	Sep	Oct			
BULBS and PERENNIALS																	
70	CRO	SNOW CROCUS	<i>Crocus chrysanthus 'Advance'</i>	BULB												Pale Yellow	24 inch on center spacing
125	SNW	SNOWDROP	<i>Galanthus nivalis</i>	BULB												White	24 inch on center spacing
50	BES	BLACKEYED SUSAN	<i>Rudbeckia hirta 'Prairie Sun'</i>	6" pot	6-12"	6-12"										Yellow	
25	BLA	BLAZING STAR	<i>Liatris spicata</i>	6" pot	6-12"	6-12"										Red-purple	
14	BFY	BUTTERFLY BUSH	<i>Buddleja davidii 'Niche's Choice'</i>	#3	18-24"	18-24"										Purple	FULL BRANCHING, FULL SHAPE
10	BFW	BUTTERFLY WEED	<i>Asclepias tuberosa</i>	#1	8"-12"	8"-12"										Yellow/Orange	FULL BRANCHING, FULL SHAPE
4	CAR	CARDINAL FLOWER	<i>Lobelia cardinalis</i>	#1	8"-12"	8"-12"										Red	
22	COL	COLUMBINE	<i>Aquilegia canadensis</i>	6" pot	6-12"	6-12"										Red/yellow	
15	CBL	CRANESBILL	<i>Geranium 'Genet'</i> ROZANNE	6" pot	6-12"	6-12"										Violet Blue	
16	HOS1	BIG BLUE HOSTA	<i>Hosta (Tardiana Group) 'Halcyon'</i>	#3	18-21"	18-21"										Lilac-blue	Substitutes should be large mature size with large blue leaves
12	HOS2	VARIEGATED HOSTA	<i>Hosta 'Janet'</i>	#3	18-21"	18-21"										Pale lavender	Substitutes should be variegated lime green with broad leaf
12	WHL	WINTERBERRY HOLLY (female)	<i>Ilex verticillata 'Aterglow'</i>	#3	18-21"	18-21"										Greenish-white	Plant as shown with Jim Dandy, designated w/ plus sign
25	WHL	WINTERBERRY HOLLY (male)	<i>Ilex verticillata 'Jim Dandy'</i>	#3	18-21"	18-21"										Greenish-white	Plant with Aterglow as shown
70	LVL	LILLY OF THE VALLEY	<i>Convallaria majalis</i>	4" POT	6-10"	6-8"										White	24 inch on center spacing
10	PJM	PJM RHODOENDRON	<i>Rhododendron (PJM Group)</i>	#5	24-30"	18-24"										Lavender	
TREES, SHRUBS, ORNAMENTAL GRASSES AND GROUND COVERS																	
2	NOR	NORWAY SPRUCE	<i>Picea abies 'Little Gem'</i>	1-1/2" CAL	5-6"	4-5"	B&B									N/A	FULL BRANCHING TO GROUND
2	RBD	EASTERN REDBUD	<i>Cercis canadensis</i>	1-1/2" CAL	5-6"	4-5"	B&B									Pale lavender	Single stem
5	DGT	FLOWERING DOGWOOD	<i>Cornus florida</i>	1-1/2" CAL	5-6"	4-5"	B&B									White	
2	DOG	TATARIAN (REDTWIG) DOGWOOD	<i>Cornus alba</i>	#5	3-4"	3-4"	CONT									White	
31	MIS	EULALIA GRASS	<i>Miscanthus sinensis 'Adagio'</i>	#1	8"-12"	8"-12"	CONT									Pink mat. to white	MIN 12 LEAVES PER PLANT
51	BBL	LILLY TURF	<i>Liriope muscari 'Big Blue'</i>	4" POT	6"-10"	6"-10"	CONT									Pale purple	MIN 8 LEAVES PER PLANT
39	OAT	NORTHERN SEA OATS	<i>Chasmanthium latifolium</i>	#1	8"-12"	8"-12"	CONT									Green	MIN 8 LEAVES PER PLANT
57	PDS	PRAIRIE DROPSAED	<i>Sporobolus heterolepis</i>	#1	6"-12"	6"-12"	CONT									Pink and brown	MIN 8 LEAVES PER PLANT
125	IVY	ENGLISH IVY	<i>Hedera helix</i>	4" POT	8"-12"	8"-10"	CONT									N/A	24 inch on center spacing

1. VERIFY QUANTITIES SHOWN IN PLANT SCHEDULE PRIOR TO DELIVERY TO SITE.
2. ONSITE LOCATION ADJUSTMENTS MAY BE REQUIRED. PLACE PLANTS WHILE STILL IN CONTAINER PRIOR TO INSTALLATION.
3. EACH PLANT PIT SHALL BE DUG TWICE THE DIAMETER OF THE ROOT BALL. SCARIFY ROOT BOUND BALLS AND UTILIZE COMPOSTED PLANTING SOIL IN PLANTING.



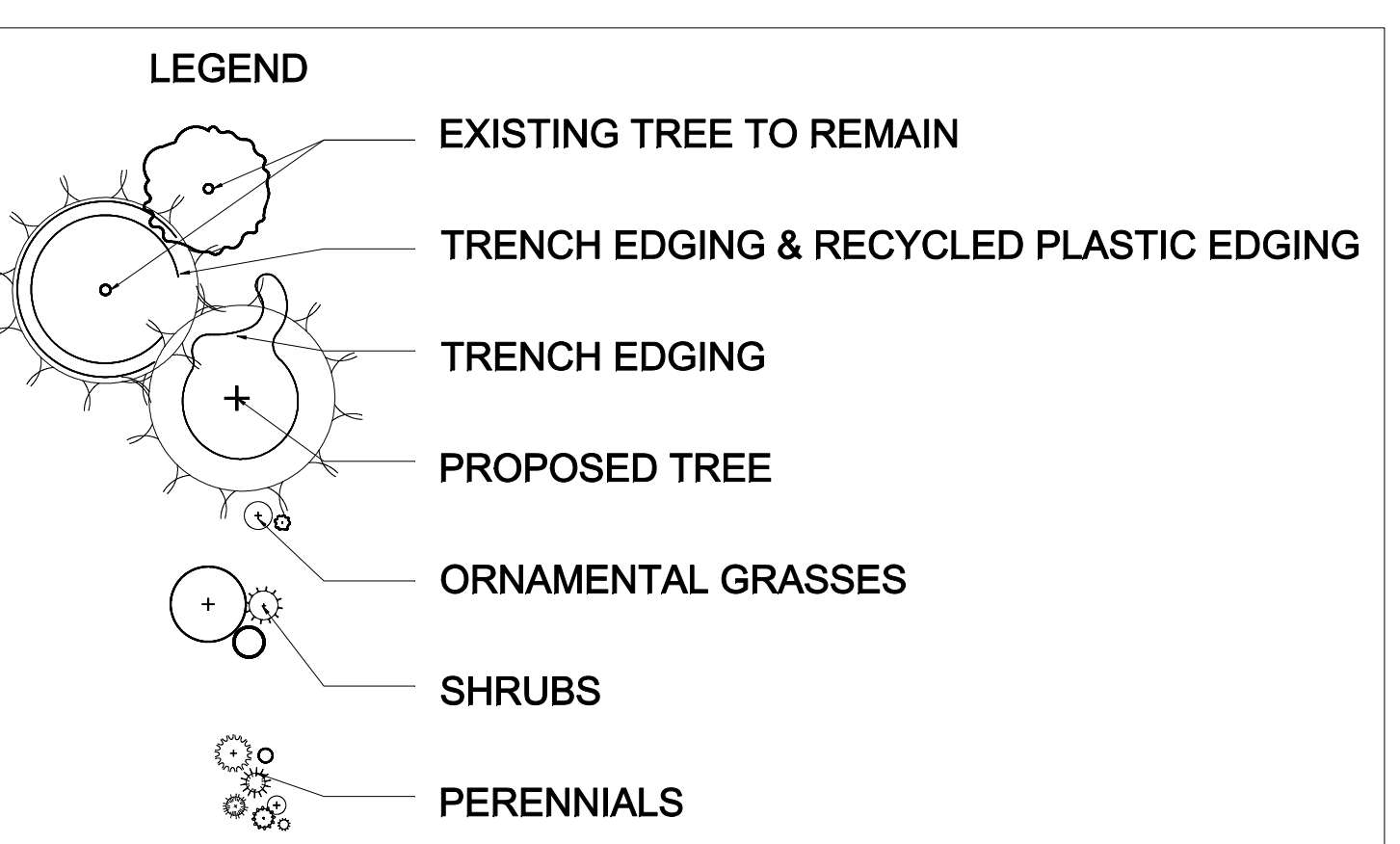
REMOVE AND HAUL EXISTING GRAVEL MULCH AND ANY FABRIC BASE. TILL IN 1 TO 2 INCH LAYER OF COMPOSTED SOIL. PROTECT TREE TO REMAIN AND SURROUNDING PAVEMENT. REPLACE IF DAMAGED. MULCH COMPLETED BED WITH 2 INCH LAYER HARDWOOD BARK MULCH.



REMOVE AND HAUL EXISTING GRAVEL MULCH AND ANY FABRIC BASE. CLEAN FLAGSTONE PATH. ADD NEW FLAGSTONE PATH (SEE NOTES). SUPPLEMENT PLANT BED WITH PLANTING SOIL (SEE NOTES) AND MULCH COMPLETED PLANT BED WITH 2 INCH LAYER HARDWOOD BARK MULCH.

- 1 TRENCH (SPADE CUT) EDGING WITH RECYCLED PLASTIC EDGING
- 2 TRENCH (SPADE CUT) EDGING
- 3 REMOVE COBBLESTONE EDGING FOR REUSE. PREPARE BEDS BY ADDING 1 TO 2 INCH LAYER OF COMPOSTED SOIL AS AVAILABLE FROM ST. LOUIS COMPOSTING. TILL IN, USING HAND METHODS NEAR TREE ROOTS GREATER THAN ONE INCH DIAMETER. MULCH COMPLETED BED WITH 2 INCH LAYER HARDWOOD BARK MULCH.
- 4 NEW LIMESTONE STEPPING STONES IN MULCH BED
- 5 REMOVE AND HAUL EXISTING GRAVEL MULCH AND ANY FABRIC BASE. CLEAN EXISTING FLAGSTONE UNITS WITH PRESSURE WASHER. INFILL JOINTS WITH LIMESTONE FINES AS NEEDED. PREPARE BED NEXT TO HOUSE BY ADDING 1 TO 2 INCH LAYER OF COMPOSTED SOIL AS AVAILABLE FROM ST. LOUIS COMPOSTING. TILL IN SOIL. COMPLETE BED WITH 2 INCH LAYER HARDWOOD BARK MULCH.
- 6 NEW FLAGSTONE PATH TO MATCH EXISTING AS CLOSELY AS POSSIBLE WITH NEW GEOFABRIC SUBBASE AND NEW 4 INCH LIMESTONE FINES FOR BEDDING AND JOINTS).
- 7 REMOVE SCRUB GROWTH. GRASSES TO REMAIN. EDGE AREA WITH TRENCH EDGE.

- 8 REMOVE AND HAUL EXISTING GRAVEL MULCH AND ANY FABRIC BASE. TILL IN 1 TO 2 INCH LAYER OF COMPOSTED SOIL AVAILABLE FROM ST. LOUIS COMPOSTING. PROTECT TREE TO REMAIN AND SURROUNDING PAVEMENT. REPLACE IF DAMAGED. MULCH COMPLETED BED WITH 2 INCH LAYER HARDWOOD BARK MULCH.



Seal:

Revision:

NO.	DATE	BY	DESCRIPTION

BAUMANN RESIDENCE
LANDSCAPE PLAN
IMPERIAL, MISSOURI