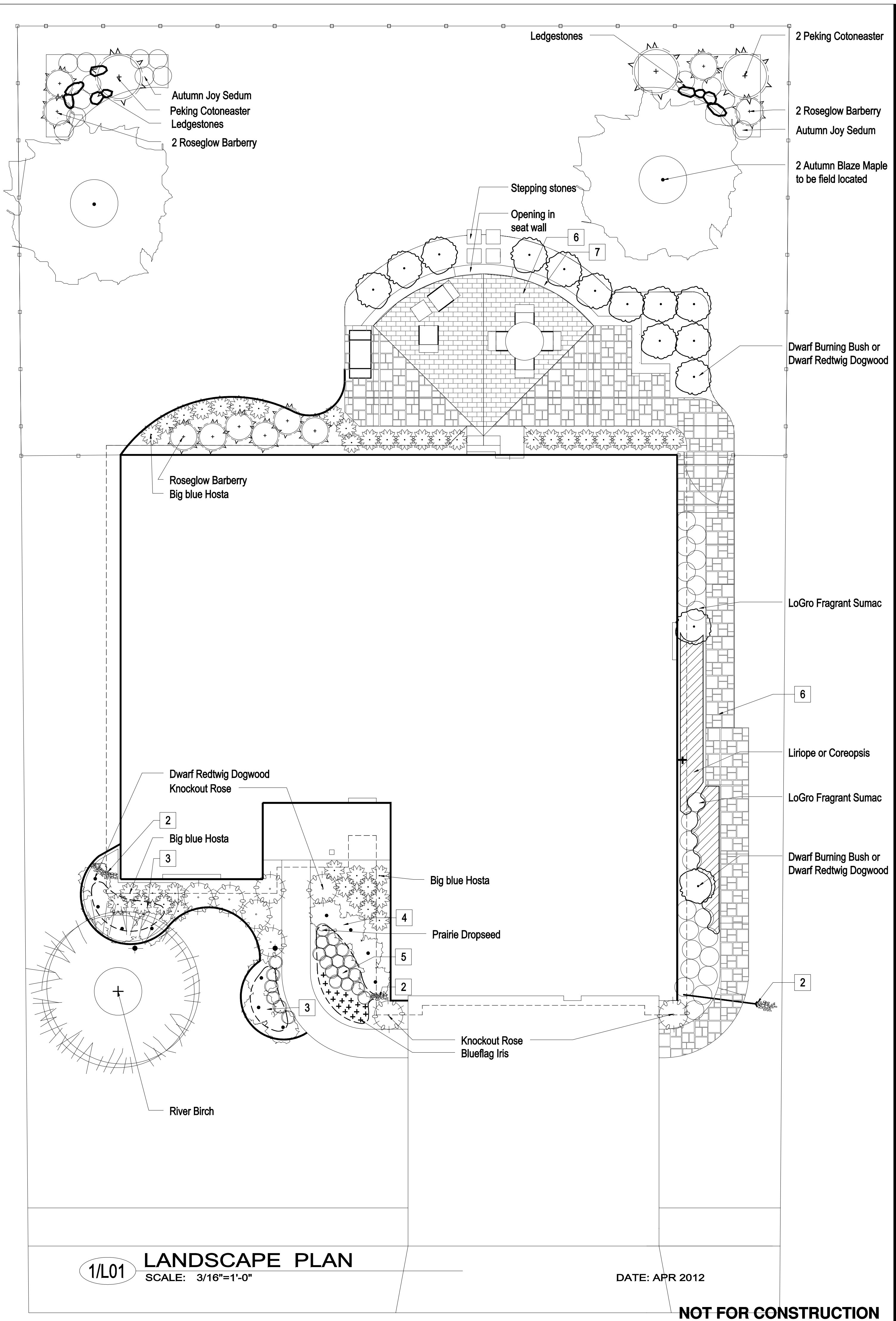


- A. Existing conditions including utilities shown are located from rough measurements in the field and should be verified prior to installation.
- B. Plants to remain are indicated. Plants to be removed under this contract should be removed completely including grubbing and hauled from site. After removal, till in two equal parts of commercially available compost from St. Louis Compost and coarse sand into plant beds. Beds should be finished with a 3 inch layer of hardwood bark mulch.
1. Existing irrigation heads. 2 of several found. Verify that existing heads can be easily relocated to accommodate new bed locations.
  2. Mexican beach pebbles on filter fabric.
  3. 8 to 12 high mound. Soil from rain garden area.
  4. Remove existing sod in its entirety.
  5. Rain garden area.
  6. Stamped, color pigmented concrete walkway
  7. 18" high seatwall, phase 2



Seal:

Revision:

NO.	DATE	BY	DESCRIPTION

**HASHLEY RESIDENCE**  
**MASTER PLAN**  
**HIGH RIDGE, MISSOURI**

Keyplan:

Scale:

Project No.: **001124**

Drawing Title: **EXISTING CONDITIONS PLAN**

Designed By: \_\_\_\_\_ Drawing No. **L01**

Drawn By: \_\_\_\_\_ Sheet \_\_\_\_\_ of \_\_\_\_\_

Checked By: \_\_\_\_\_

**NOT FOR CONSTRUCTION**